

*SportingPulse*

# *Sportzware* *Central*

**Version 6.3 Upgrade Guide**



■ *Technology for Champions*

[www.sportingpulse.com](http://www.sportingpulse.com)

**NOTE:** If you are upgrading from a version earlier than Version 6.0 then DO NOT follow the below instructions. The only way you will be able to upgrade is by performing a full install which can be obtained by contacting SportingPulse Support on 1300 13 99 70 or support@sportingpulse.com.

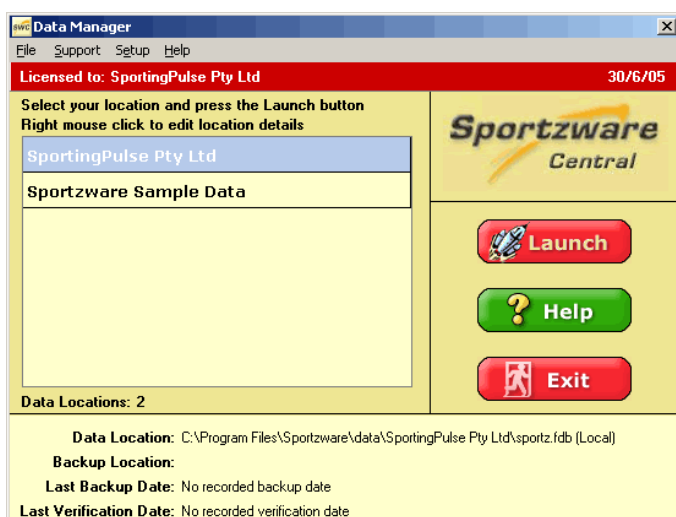
## UPGRADING (STAND ALONE MACHINE)

The following instructions are based on a standard stand alone install of Sportzware Central. If you are upgrading for a network install please note the following:

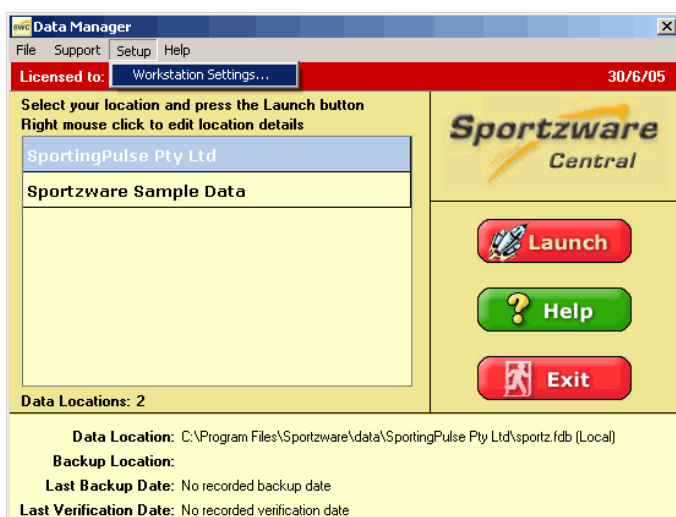
- 1) All upgrading of Sportzware Central must take place on the Server Computer
- 2) Navigating to the Sportzware Central on a client machine will most likely be through a networked drive and the file path will be different to the one described below.

If you have any queries about upgrading please do not hesitate to contact the support line on 1300 13 99 70 before you begin to upgrade.

### 1. Launch the Sportzware Central

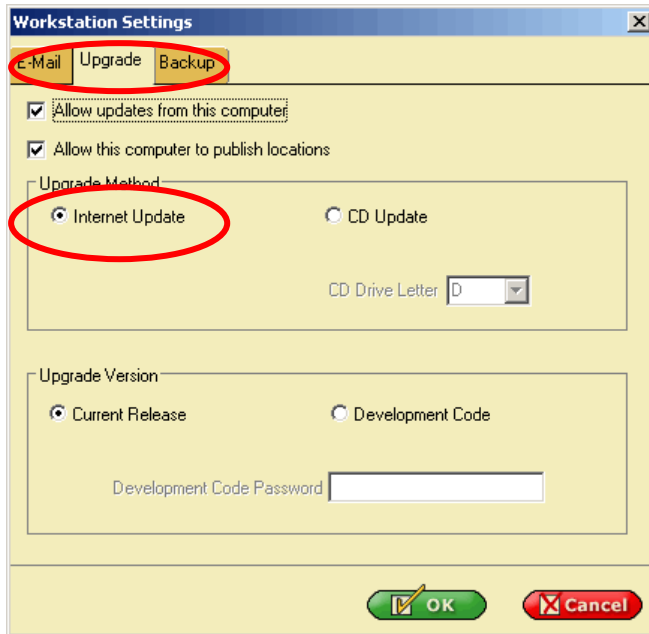


### 2. Go to the Setup menu and select Workstation Settings

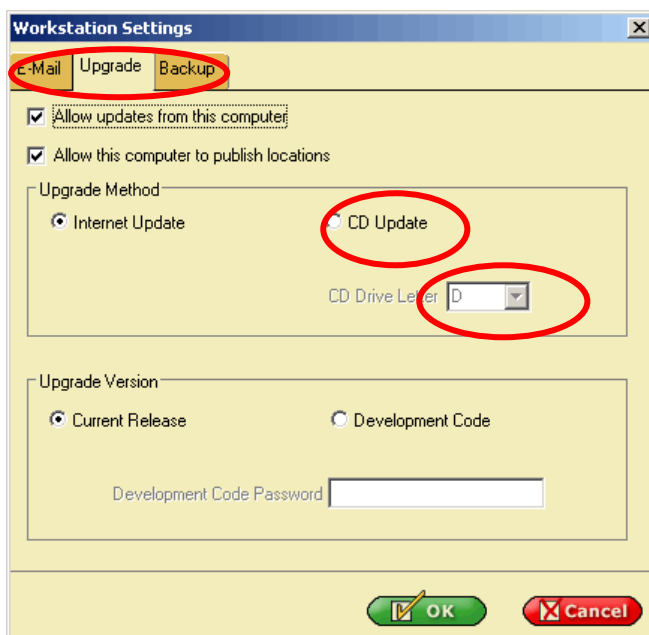


3. At this point you can either upgrade via the Internet or by a CD that you ordered from SportingPulse Support.

If you are upgrading over the Internet then in the 'Workstation Settings', on the 'Upgrade' tab you will need to select 'Internet Update' under 'Upgrade Method'.

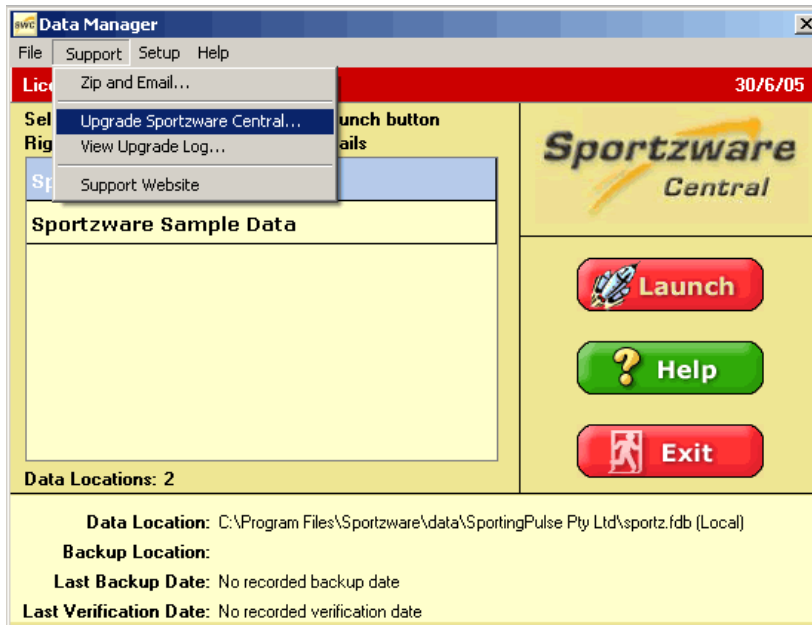


If you are upgrading from a CD mailed to you by SportingPulse Support then in the 'Workstation Settings', on the 'Upgrade' tab you will need to select 'CD Update' under 'Upgrade Method'. You will also need to select which drive the CD is in from the "CD Drive Letter" drop down list.

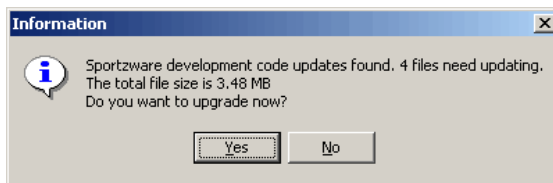


Click on 'OK' to save your changes.

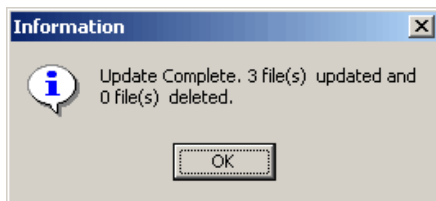
4. Go to the Support menu and select 'Upgrade Sportzware Central'



5. A message will appear telling you, how many files are going to be downloaded and updated. Click on the 'Yes' button to proceed.



7. Once the upgrade is complete a message will appear telling you how many files have been updated. Click on the 'OK' button to close the message.



8. Your version of Sportzware Central should no be upgraded.

## **UPGRADING (SERVER MACHINE)**

When updating a server setup it is important to upgrade the server machine first. When undertaking the upgrade process it is essential that no users have Sportzware Central running on any machine on the network.

In order to upgrade the Server Machine complete the same steps as you would for 'Upgrading (Stand Alone Machine)'.

## **SUPPORT**

If you experience any problems with upgrading then please contact SportingPulse Support:

**Email:** [support@sportingpulse.com](mailto:support@sportingpulse.com)

**Phone:** *(from within Australia):* 1300 139 970

**Phone:** *(from within New Zealand):* 0800 808 202

**Phone:** *(Melbourne Office):* +61 3 9872 5277

**Website:** [support.sportingpulse.com](http://support.sportingpulse.com)